

# Project Metrics Suite for ConnectWise Manage Integration

The Project Metrics Suite for ConnectWise app gives complete visibility on all active projects. It tells which projects are on track regarding delivery time and budget hours, and shows the total Cost Performance Index (CPI).  
With the Project Metrics Suite, users can also monitor projects per status, customer, and project manager. They can also do a deep dive into active project tickets to investigate other details affecting project completion.

- [List of Dashboards](#)
- [Terms and Calculations](#)
- [Project Summary](#)
- [Project Details](#)
- [Project Completion](#)
- [Active Project Tickets Summary](#)

## List of Dashboards

Dashboard Name	Description
Project Summary	This dashboard provides an overview of all active projects so stakeholders can easily monitor their progress and provide timely support. It shows the Cost Performance Index (CPI), the percentage (%) of on-track projects with regard to the delivery date and budget hours, and the breakdown of projects per status, customer, and manager.
Project Details	This dashboard allows users to do a deep dive into specific projects or customers and see more details that affect project completion such as % Budget Remaining, Start Date, and Scheduled Date.
Project Completion	This dashboard shows an overview of project completion by dividing active projects based on the number of days before the scheduled completion date.
Active Project Tickets Summary	This dashboard shows the count of active project tickets per board, status, and date created. In addition, it gives complete visibility of aging project tickets with respect to the Created Date and Last Updated Date.

## Terms and Calculations

Terms	Definition/Calculation
Cost Performance Index (CPI)	The ratio of calculated budget labor and actual labor put into a project. This helps measure the project's effectiveness and efficiency.
% On Track Delivery Date	Percentage of projects that are not beyond the scheduled completion date
% On Track Budget Hours	Percentage of projects with actual labor hours not exceeding the budget hours
Budget % Remaining	(Budget Hours - Actual Labor Hours) / Budget Hours
Timeline % Elapsed	Percentage of the project duration. This is computed as:  Scheduled Completion Date - Scheduled Start Date
Last Activity	Date of the last time entry for a project
Agreement Attached	Count of unique agreements tagged to the project
Actual Start	Date of the first-time entry for a project
Actual End	Date when the project ended
Days Past Schedule End	(If the project is open) Number of days after the scheduled completion date
Days to Completion	Count of days before the scheduled completion date
Project Ticket Age	For active project tickets, this is calculated as:  Current Date - Ticket Created Date  or  Current Date - Last Updated Date

## Project Summary

The available slicers are the Status, Project Manager, and Project Type slicers.



The available slicers are the Status, Project Manager, and Project Type slicers.

Status

Closed

+ 4

Project Manager

Alvin Kaplan

+ 28

Project Type

Consulting

+ 7

Total Projects

47

Total Projects

Total Budget Hours

1,608.50

Total Budget Hours

Total Hours Actual

1,110.75

Total Hours Actual

CPI

1.45

CPI

On Track | Budget Hours

48.94%

On Track | Budget Hours

On Track | Delivery Date

70.21%

On Track | Delivery Date

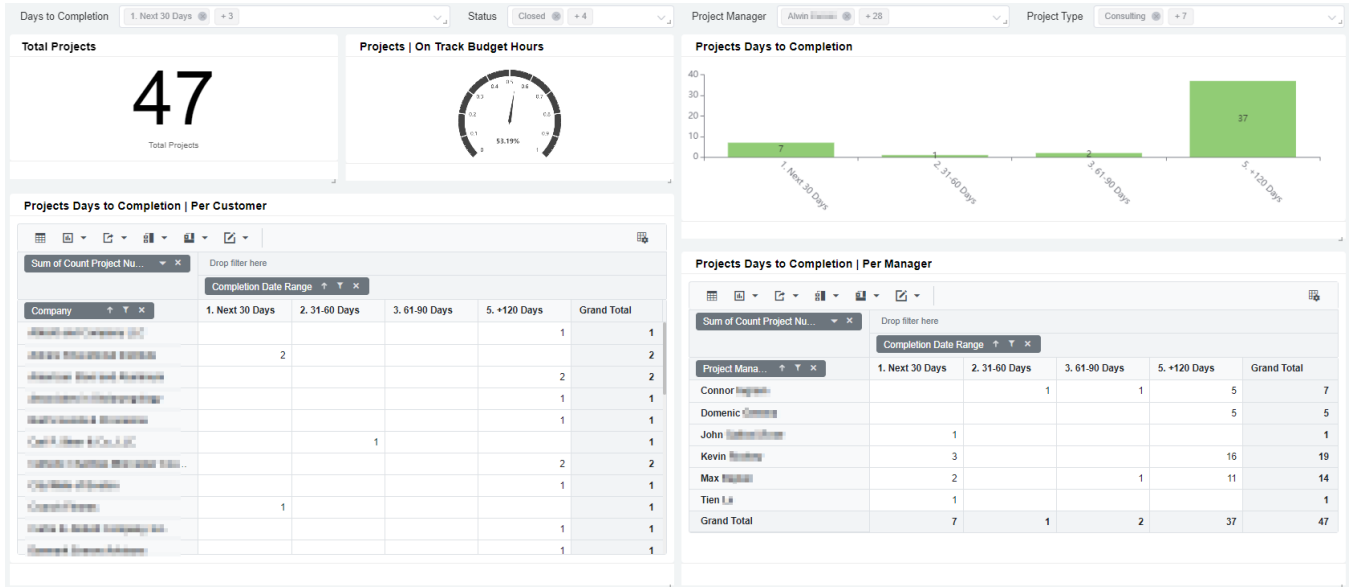
Project Detail

Customer	Project	Project Name	Project Manager	Estimated Hours	Budget Hours	Actual Hours	Scheduled Hours	Last Schedule	Budget Hours Remaining
IT/IT	206	Domain Controller Project	Max Kaplan	200.00	200.00	154.85	0	2022-08-25	45.15
IT/IT	378	IT/IT Management Tools Managing	Domenic Greene	115.00	115.00	158.53	0	2022-08-11	0.00
IT/IT	401	IT/IT Migration	Max Kaplan	10.00	10.00	8.62	0	2022-08-11	1.38
IT/IT	404	IT/IT Migration	Max Kaplan	70.00	70.00	107.21	0	2022-08-25	0.00
IT/IT	415	IT/IT Migration	Max Kaplan	12.00	12.00	6.53	0	2022-05-19	5.47
IT/IT	419	IT/IT Migration	Max Kaplan	105.00	105.00	24.23	0	2022-07-28	80.77
IT/IT	422	IT/IT Migration	Kevin Flanigan	6.00	6.00	19.99	0	2022-04-29	0.00
IT/IT	432	IT/IT Migration	Max Kaplan	30.00	30.00	20.04	0	2022-08-25	9.96
IT/IT	436	IT/IT Migration	Max Kaplan	52.00	52.00	71.30	0	2022-08-25	0.00
IT/IT	437	IT/IT Migration	Connor Ingram	80.00	80.00	33.22	0	2022-08-25	46.78
IT/IT	438	IT/IT Migration	Kevin Flanigan	48.00	48.00	7.99	0	2022-03-07	40.01
IT/IT	439	IT/IT Migration	Max Kaplan	100.00	100.00	81.47	0	2022-08-24	18.53
IT/IT	440	IT/IT Migration	Kevin Flanigan	28.00	28.00	2.75	0	2022-02-15	25.25
IT/IT	441	IT/IT Migration	Domenic Greene	0.00	0.00	5.24	0	2022-03-30	0.00
IT/IT	445	IT/IT Migration	Kevin Flanigan	7.00	7.00	15.42	0	2022-06-01	0.00
IT/IT	448	IT/IT Migration	Kevin Flanigan	0.00	0.00	2.68	0	2022-08-15	0.00
IT/IT	449	IT/IT Migration	Kevin Flanigan	15.00	15.00	33.65	0	2022-08-03	0.00
Sum:				1533	1560	1110.75	Sum:	0	706.27

## Project Completion

The Project Completion dashboard shows an overview of project completion by dividing projects based on the number of days before the scheduled completion date.

The available slicers are the Days to Completion, Status, Project Manager, and Project Type slicers.



## Active Project Tickets Summary

The Active Project Tickets Summary dashboard shows the count of active project tickets per board, status, and date created. In addition, it gives complete visibility of aging project tickets with respect to the Created Date and Last Updated Date.

The available slicers are Board, Team, Technician, and Status slicers.

