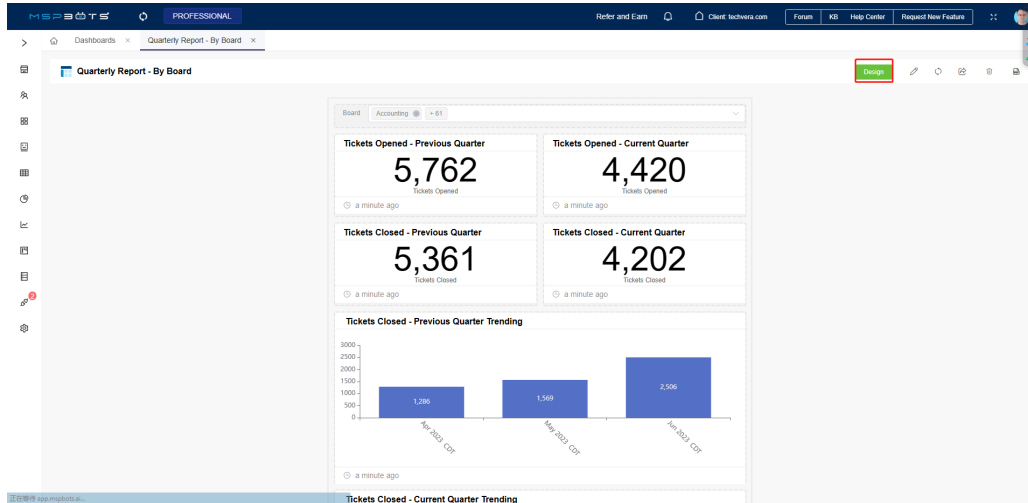
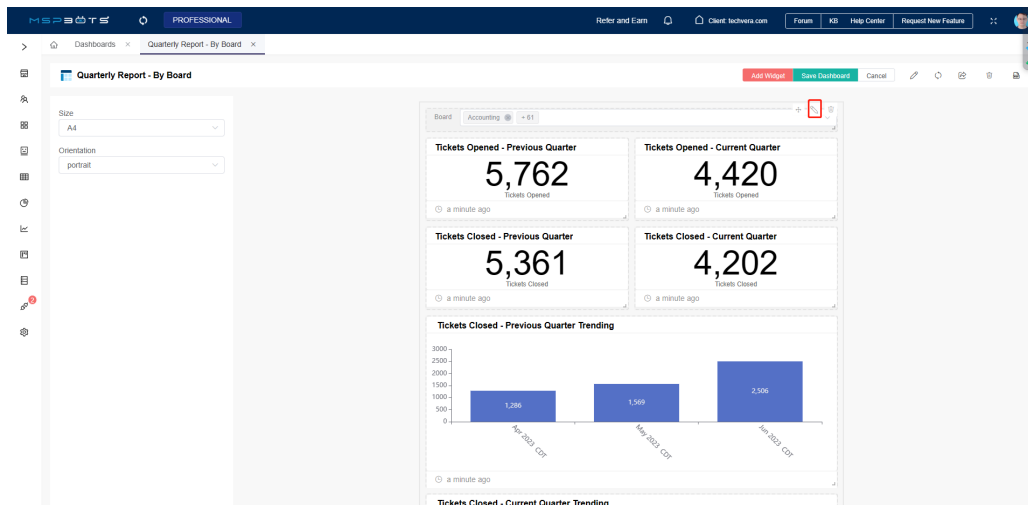


# How to setup multiple slicer in report

1. Click "Design" go to the design model, edit the slicer



2. Click the edit menu, go to the widget edit model

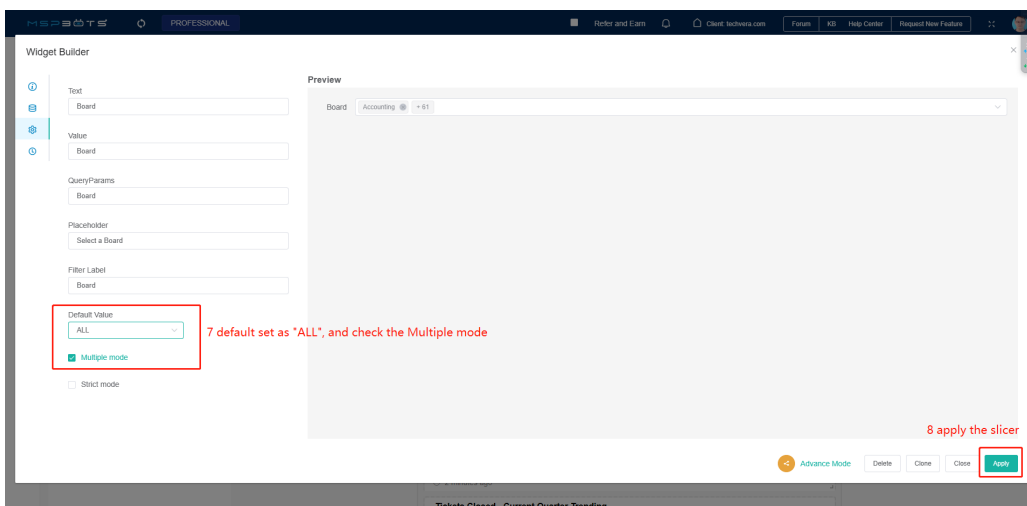
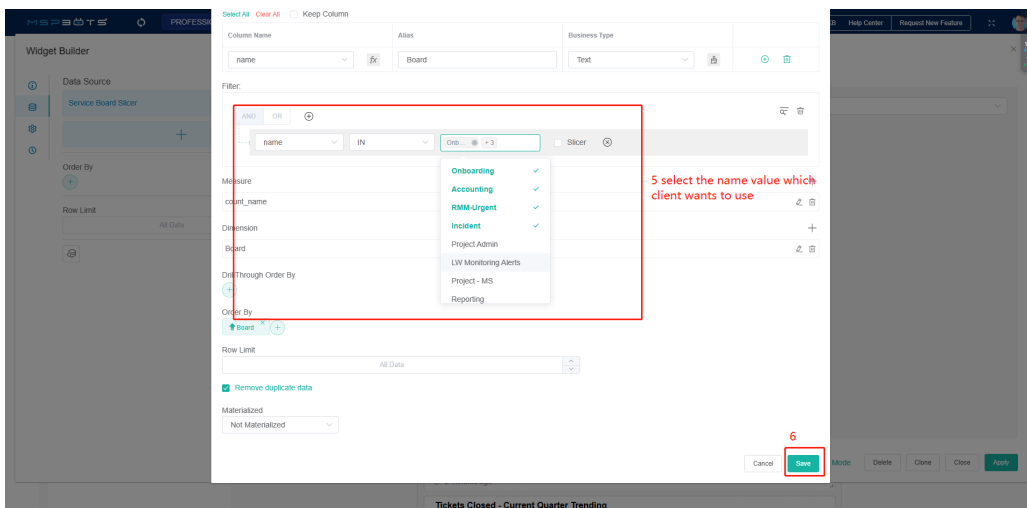
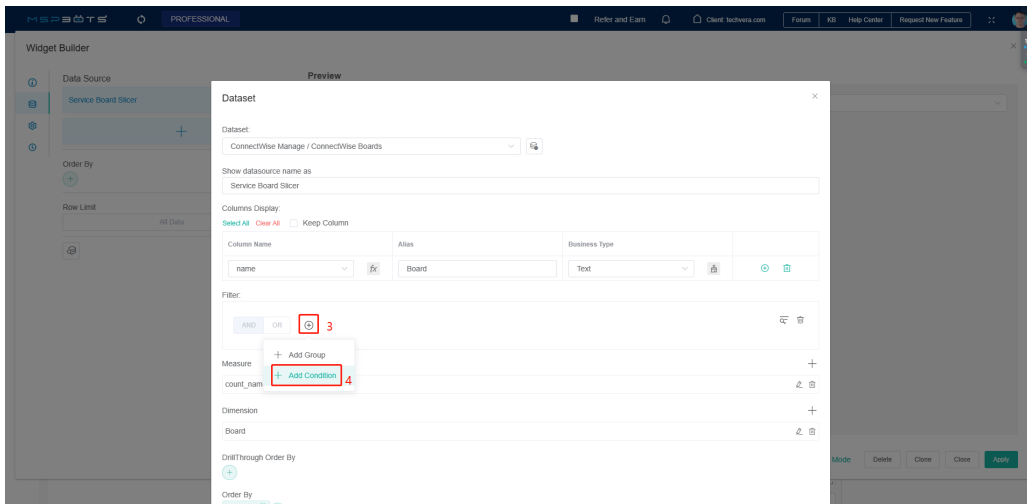


3. Set the filter and configuration of the slicer as following steps

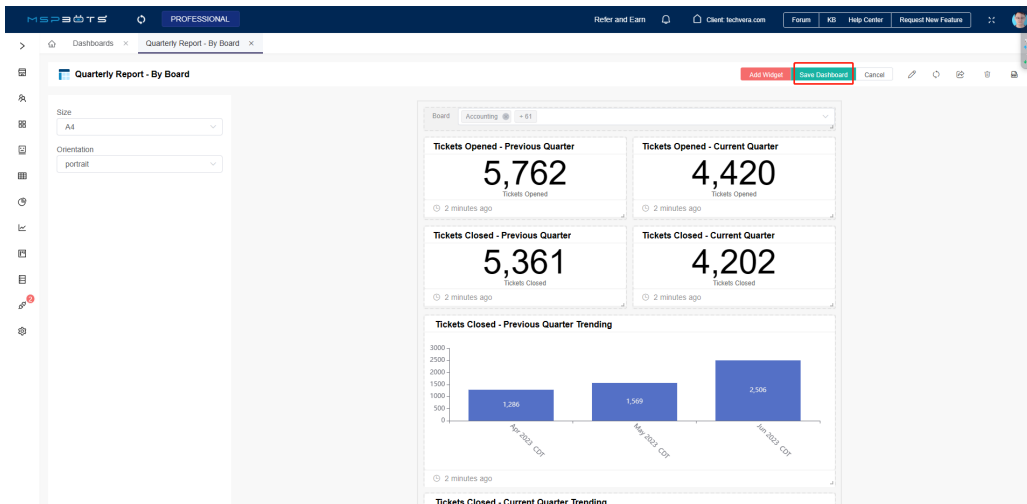
The screenshot shows the "Widget Builder" interface. The "Data Source" section is set to "Service Board Slicer". The "Order By" section is set to "All Data". The "Row Limit" section is set to "All Data". The "Preview" section shows the dashboard layout. The "Edit" button is highlighted in the top right corner.

1. Click the edit icon (pencil) next to the Service Board Slicer widget.

2. Click the "Edit" button in the context menu.



4. Go back to the report page, click "Save Dashboard"



5. Click the "Share" button, then switch to the snapshot page, create the snapshot email task, then click "Send Now" or "Send to Me"

Share Dashboard

SHAREABLE LINK **SNAPSHOT** EMBED

Delivery options: ☒ Email

Email recipient(s):

PSA:

Frequency:  Starting at: 06/23/23 22:22:11

Repeat every:  1 Hour

Attach the dashboard: ☒

File format: ☒ PDF

From:  Select From Address

Add a custom subject (required):

Include Shareable link: ☒

Update Cancel

Scheduler Log

Recipient	Frequency	File Format	Send Now
amorrow@techeva.com	14 38 1/23 * * *	PDF	<input checked="" type="checkbox"/>

Send to Me

6. Then you will receive an email, you can download the attachment, it a PDF file.

7. If you want to change the value, please go back to run the Step 1.