

Financial Suite for Autotask Integration

The Financial Suite for Autotask Integration provides insights on key metrics such as Profit Margin, Effective Rate, and Contribution Rate to ensure profitability. The metrics breakdown according to contract type, company, and trend graphs determine the correctness of contracts and effectiveness of labor cost management.

This page discusses the following about the Financial Suite integration with MSPbots:


- [How to install the Financial Suite for Autotask Integration](#)
- [How to access the Financial Suite for Autotask Integration](#)
- [Dashboards and Settings](#)
 - [Financial Dashboard - Contract Profitability Summary](#)
 - [Financial Dashboard - Contract Detail](#)
 - [Financial Dashboard - Margin Review](#)
 - [Financial Dashboard - Effective Rate](#)
 - [Contracts Financial Suite Settings](#)
- [Dashboard Terms and Calculations](#)
 - [Related Topics](#)

How to install the Financial Suite for Autotask Integration

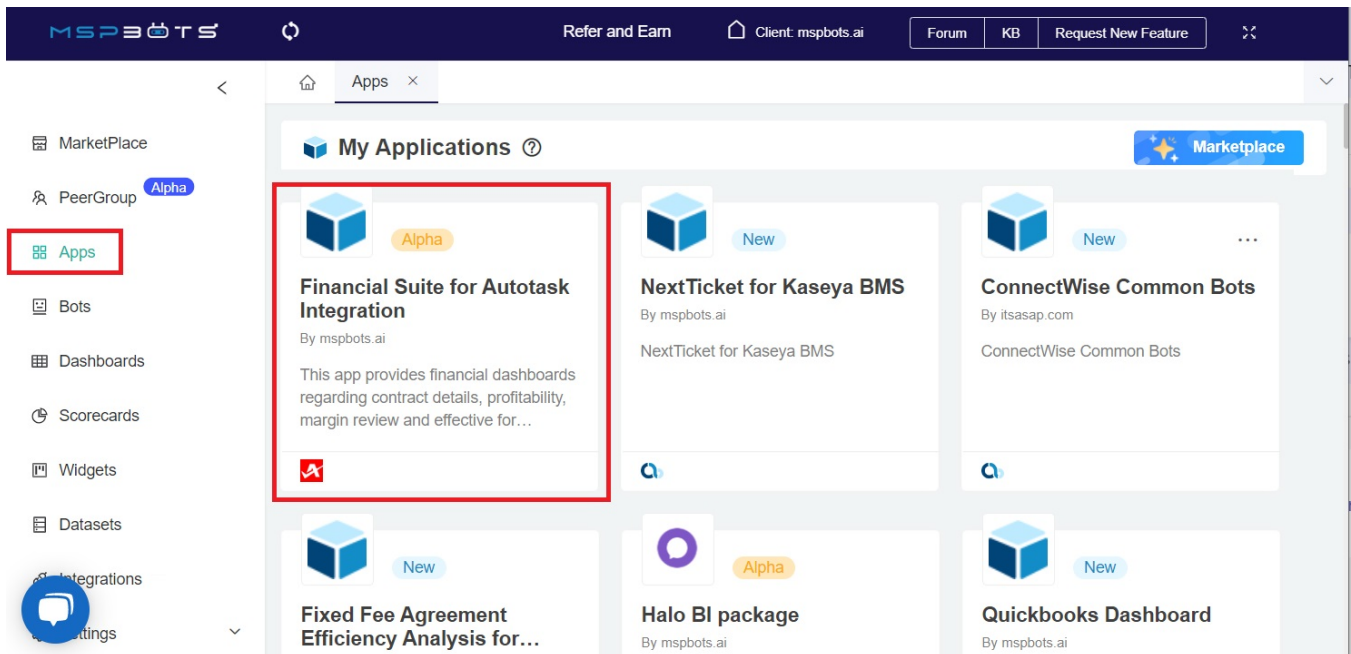
The Financial Suite app is pre-installed with your MSPbots subscription and is available in the Apps section.

How to access the Financial Suite for Autotask Integration

You must have a successful Autotask integration with MSPbots before you can access the Financial Suite for Autotask Integration.

 Only users with admin and financial roles can access the Financial Suite.

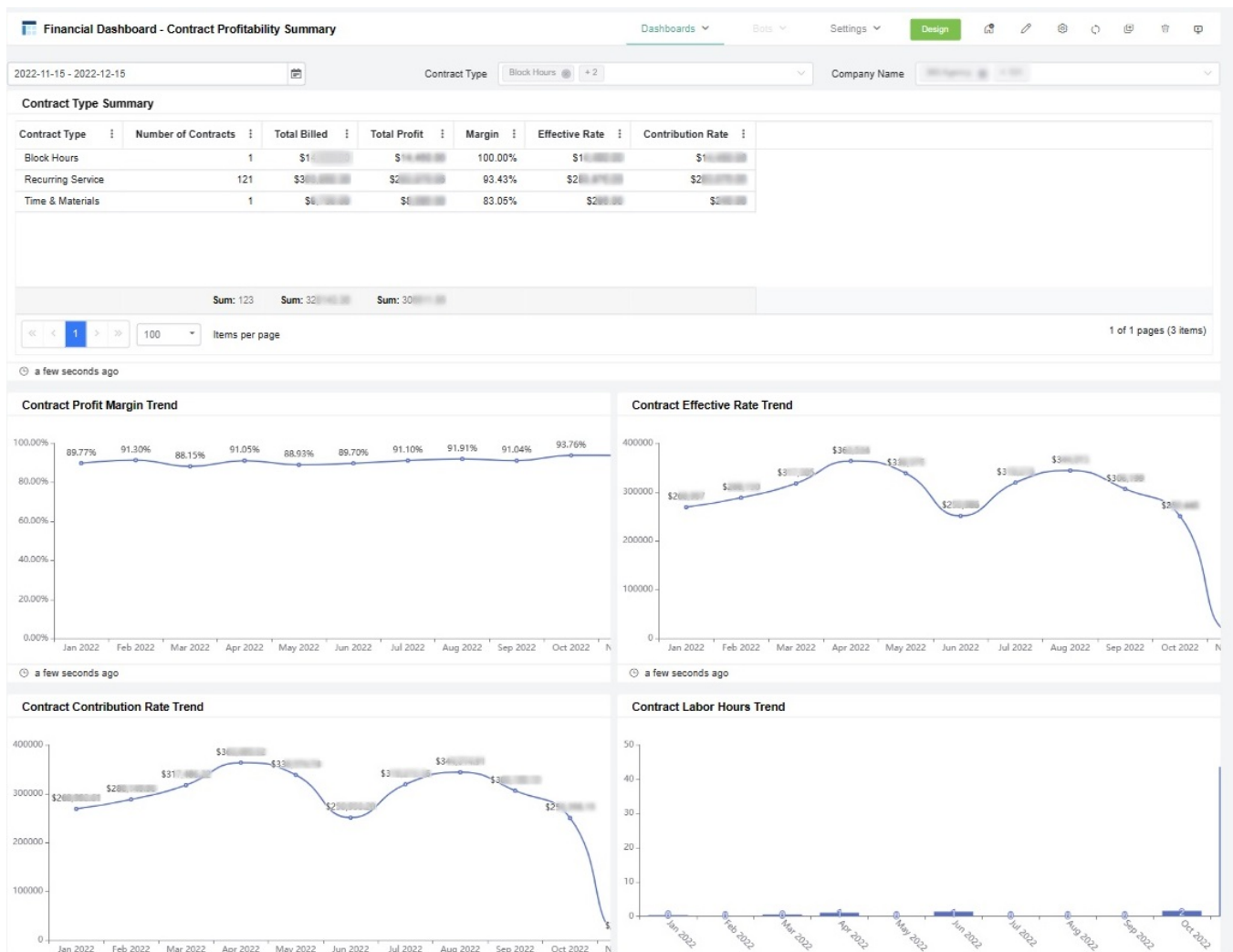
To access the Financial Suite app and view the dashboard and settings, go to [Apps](#) on the MSPbots menu and click **Financial Suite for Autotask Integration**.



Dashboards and Settings

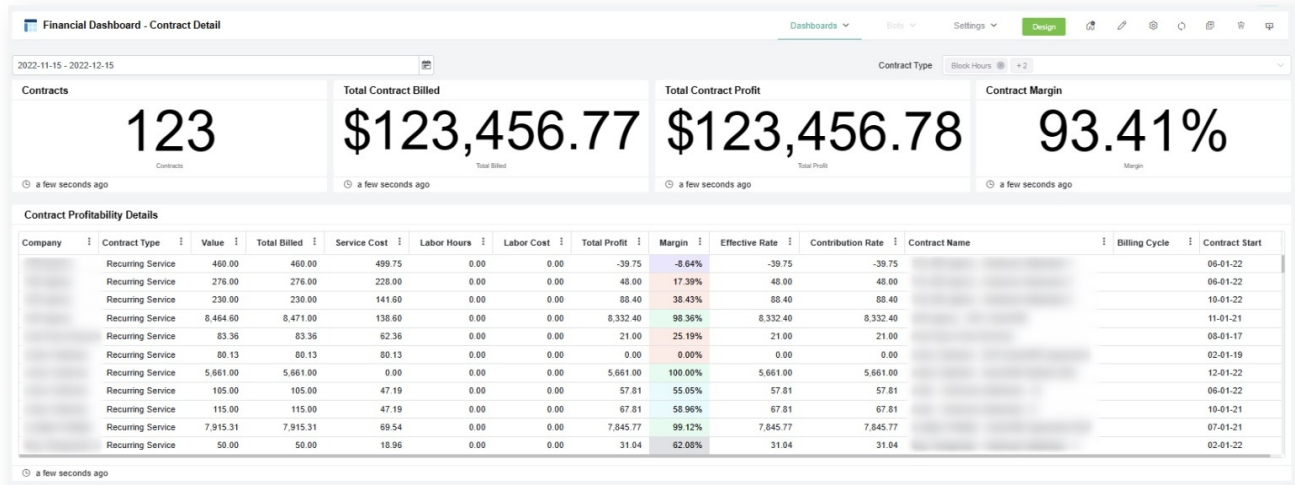
Financial Dashboard - Contract Profitability Summary

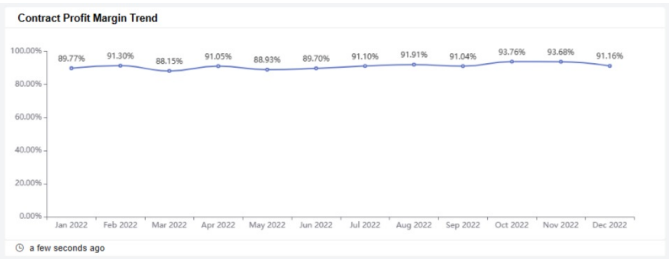
The Contract Profitability Summary dashboard shows metrics like total billed, margin, effective rate, contribution rate, and profit per contract classification. It also contains graphs showing the monthly trend for these KPIs. The results on this dashboard are filtered using the **Date Range**, **Contract Type**, and **Company Name** slicers.



Financial Dashboard - Contract Detail

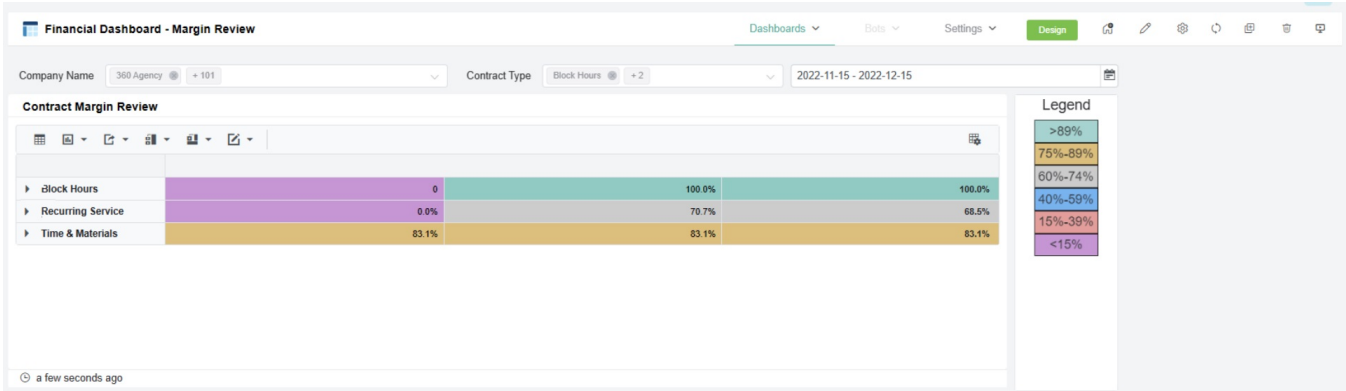
The Contract Detail dashboard shows a breakdown of the same metrics as the Contract Profitability Summary dashboard but on a per contract-company level. It also contains graphs for the trend of the labor hours vs. target and profit margin %. The results on this dashboard can be filtered using the **Date Range** and **Contract Type** slicers.





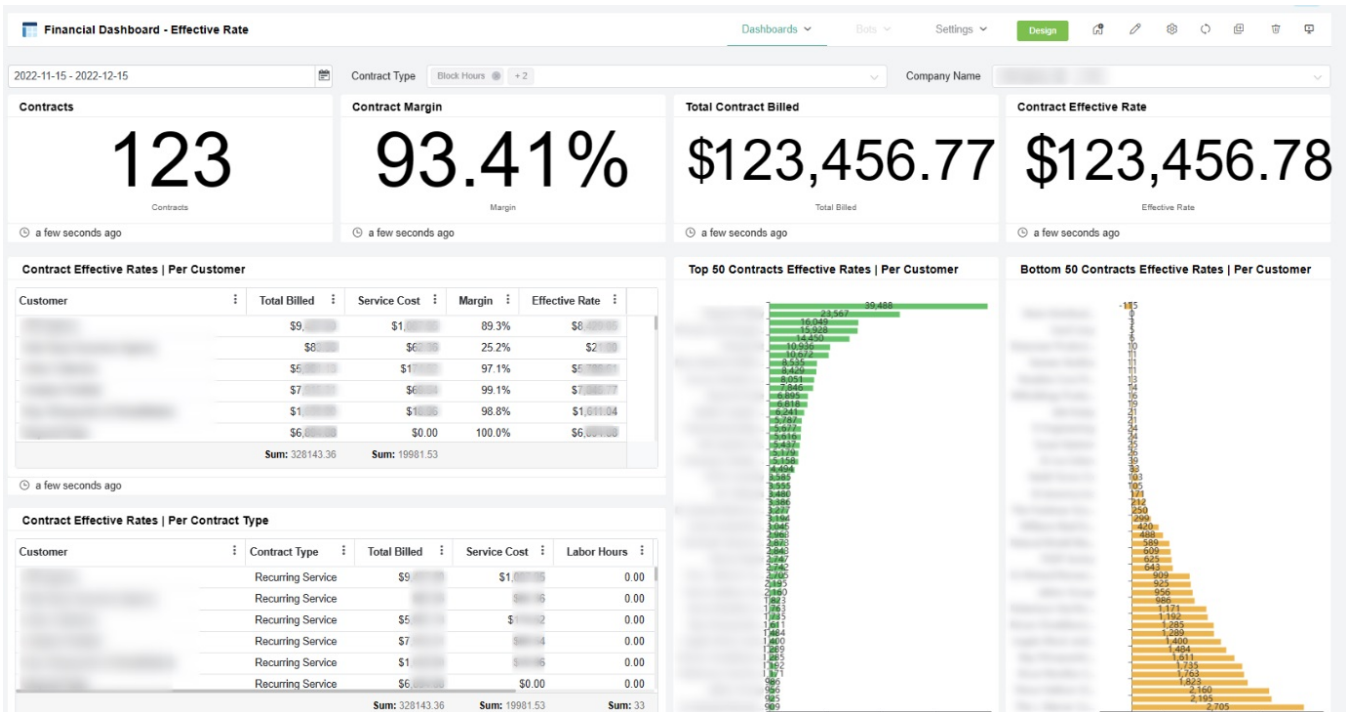
Financial Dashboard - Margin Review

The Margin Review dashboard displays the trend of the monthly margins of all the companies under each contract classification. It allows business owners and service managers to determine the companies for observation. The results on this dashboard are filtered using the **Date Range**, **Contract Type**, and **Company Name** slicers.



Financial Dashboard - Effective Rate

The Effective Rate dashboard shows the effective rates for each customer and the contract classification with a breakdown of billed, additional costs, and labor hours. The results are filtered using the **Date Range**, **Contract Type**, and **Company Name** slicers.



Contracts Financial Suite Settings

This dashboard contains the Contracts Financial Suite Settings where the target cost margin is set.

Contracts Financial Suite Settings

Dashboards ▾
Bots ▾
Settings ▾
Design

Contracts Financial Suite Setti...
?

Contract Target Hours

Target Margin

0.70

Clear

Submit

Dashboard Terms and Calculations

Terms	Calculations
Value	Value = Quantity × Unit Price
Target Hours	Budgeted hours to achieve the Target Total Cost Margin %, which is set in the Contract Financial Suite Settings for App Packages dashboard. $\{[Target\ Total\ Cost\ Margin\ \% - (Service\ Cost \div Billed)] \times Billed\} \div Average\ Hourly\ Labor\ Rate$
Profit	Billed - (Service Cost + Labor Costs)
Margin	Profit ÷ Billed
Effective Rate	(Billed - Service Cost) ÷ Labor Hours (If the labor hours is < 1, then it is rounded off to 1.)
Contribution Rate	Profit ÷ Labor Hours (If the labor hours is < 1, then it is rounded off to 1.)
Billed	The sum of [(Actual Quantity × Unit Price) + Service Total] for all invoices within the selected date range
Ave. Hourly Labor Rate	The average of the hourly labor rates of all active technicians with a work type tagging
Service Costs	Sum of (Actual Quantity × Unit Cost) for all invoices within the selected date range
Actual Labor Hours	Total recorded hours for a contract

Related Topics

- [Financial Suite for ConnectWise Manage Integration](#)
- [How to Access and Use the Accounting Mapping Feature](#)
- [When can I use the Financial Role](#)